



## Bourdon Tube Pressure Gauges

Black ABS Plastic Case  
Copper Alloy Wetted Parts

Liquid Filled Case

Standard Series • Type 113.13

### Pressure Gauges

#### Application

Service conditions where pulsation or vibration exists.  
Fluid medium which does not clog connection port or corrode copper alloy. Example: hydraulic and pneumatic systems, pumps, compressors, water systems, regulators.

#### Sizes (All sizes not stocked)

1½", 2", 2½" (40, 50, and 63 mm)

#### Accuracy

± 1.5% of span - 2" and 2½" (ASME B40.1 Grade B)

± 3/2/3% of span - 1½" (ASME B40.1 Grade B)

#### Ranges (All ranges not stocked)

Vacuum / Compound to 30"HG / 0 / 200 PSI

Pressure from 10 PSI to 6000 PSI

or other equivalent units of pressure or vacuum

#### Working Range

Steady: 3/4 of full scale value

Fluctuating: 2/3 of full scale value

Short time: full scale value

#### Operating Temperature

Ambient: -4°F to 140°F (-20°C to 60°C)

Media: max. 140°F (+60°C)

#### Temperature Error

Additional error when temperature changes from reference temperature of 68°F (20°C) ±0.4% for every 18° F (10°C) rising or falling. Percentage of span.



### Standard Features

#### Connection

Material: copper alloy

Lower mount (LM) - not available for 1½" size

Center back mount (CBM)

1/8" or 1/4" NPT limited to wrench flat area

#### Bourdon Tube

Material: copper alloy

30" Hg (Vac) to 600 PSI C-type

800 PSI to 6000 PSI helical type

#### Movement

Copper alloy

#### Dial

White plastic with stop pin and black lettering

#### Pointer

Black ABS pointer - non-adjustable

#### Case

Black ABS plastic case

#### Weather Protection

Weather tight (IP 65), NEMA 4X

#### Standard Scale

PSI

#### Window

Acrylic, ultrasonically welded to case

#### Liquid Filling

Glycerine

#### Order Options (min. order may apply)

Front or rear flange

U-Clamp bracket CBM only

Brass threaded restrictor

Special connections limited to wrench flat area

Custom dial layout

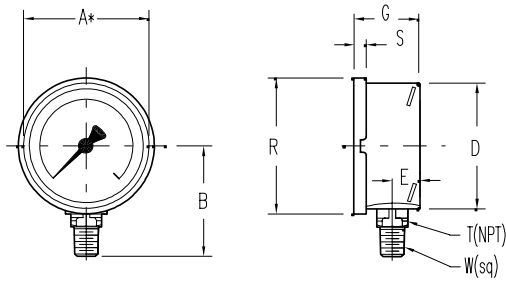
DIN standards

Other pressure scales available:

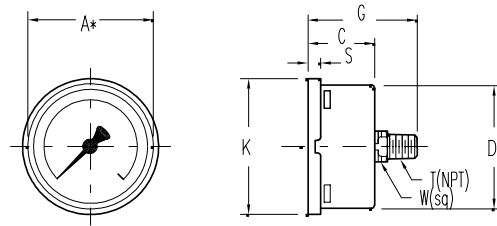
Bar, kPa, MPa, Kg/cm<sup>2</sup> and dual scales

**APM 113.13**  
**(APM 01.04)**

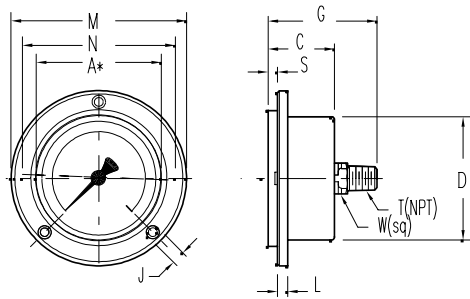
**Dimensions:**



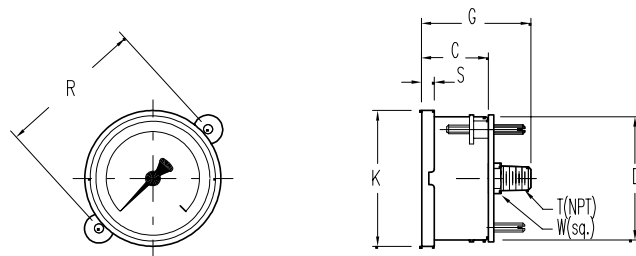
113.13 LM



113.13 CBM



113.13 CBM/FF



113.13 CBM/UC

A\* NOMINAL SIZE

TYPE/SIZE	WEIGHT	KEY	A*	B	C	D	E	G	J	K	L	M	N	R	S	T	W
113.13 1½"	0.3 lbs.	mm	40	--	26.5	41	--	42.5	--	--	--	--	--	--	--	1/8"	12
		in	1.5	--	1.04	1.61	--	1.67	--	--	--	--	--	--	--	--	NPT
113.13 2"	0.4 lbs.	mm	50	48	29	51	11.5	48.5	3.6	55	4	71	62	58	6	1/4"	14
		in	2.0	1.89	1.14	2.01	.45	1.91	.14	2.17	.16	2.80	2.44	2.28	.23	NPT	.55
113.13 2½"	0.5 lbs.	mm	63	54	29	63	11.5	54	3.6	68	4	85	75	72	6	1/4"	14
		in	2.5	2.13	1.14	2.48	.45	2.12	.14	2.68	.16	3.35	2.95	2.83	.23	NPT	.55

Recommended panel cut-out: D + 1 mm

THE MEASURE OF  
**Total Performance™**

**Ordering Information:**

State computer part number (if available) / type number / size / range / connection size and location / options required.

Specifications given in this price list represent the state of engineering at the time of printing. Modifications may take place and the specified materials may change without prior notice

05/02



**WIKAI Instrument Corporation**  
1000 Wiegand Boulevard  
Lawrenceville, Georgia 30043-5868  
Tel: 770-513-8200 Fax: 770-338-5118  
http://www.wika.com e-mail: info@wika.com